

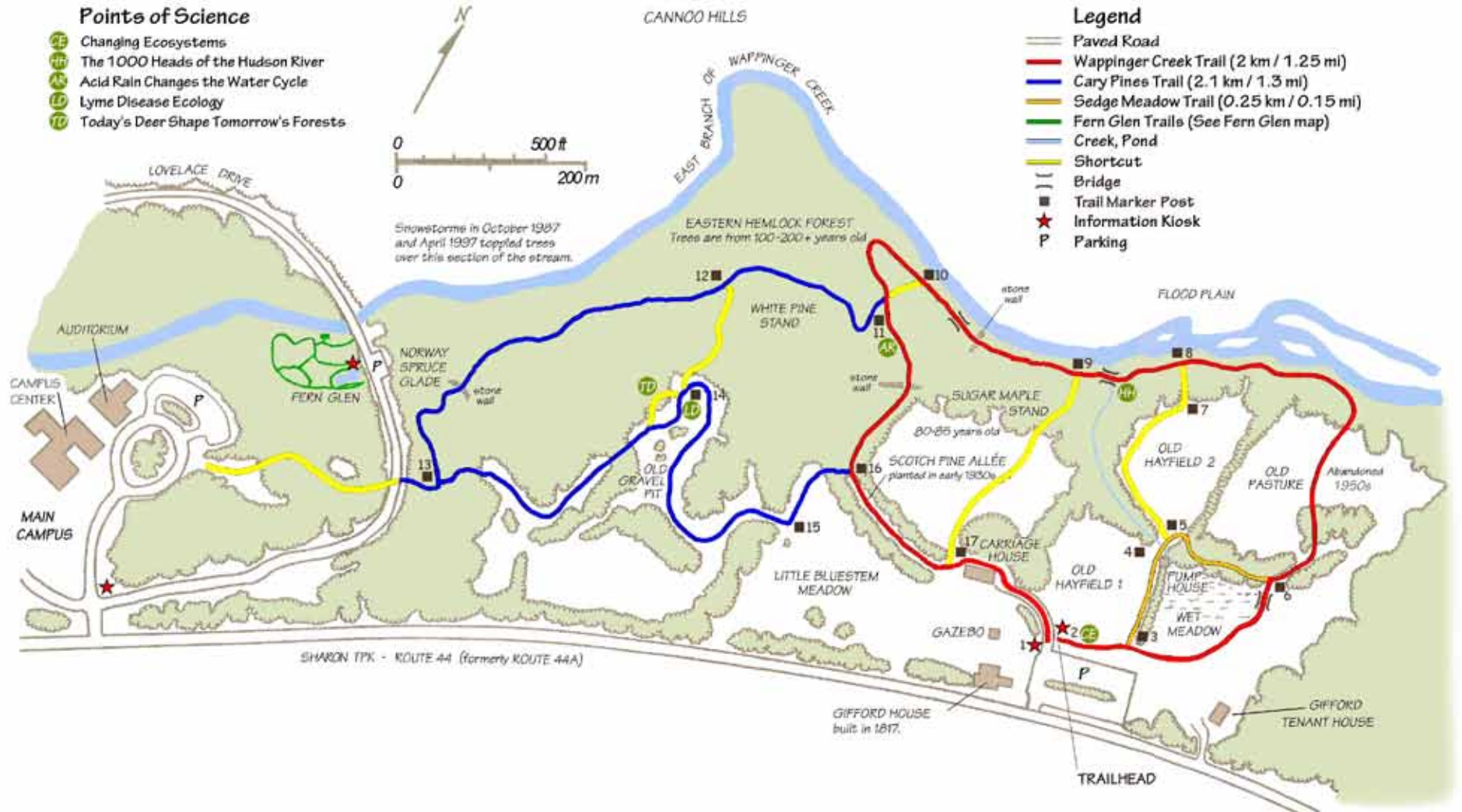
Wappinger Creek Trail Network

The **Wappinger Creek Trail** follows the East Branch of Wappinger Creek for part of the trail's two kilometer (1.25 mile) length. The Wappinger Creek, which flows to the Hudson River, is named after the Wappinger Indians, of the Algonquin culture, who once lived in this area. The trail passes through forests, marshes, and old fields before heading back to the Gifford House. It is a relaxed 30 to 40 minute walk.

The **Sedge Meadow Trail** (off the Wappinger Creek Trail) takes visitors on a small boardwalk that cuts through a young stand of red maples in a sedge-hummock wetland.

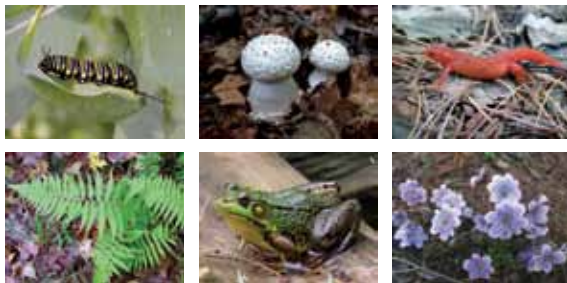
The **Cary Pines Trail** winds through open spaces, thickets, and peaceful pine and hemlock forests before rejoining the Wappinger Creek Trail. This 2.1 kilometer (1.3 mile) trail is a relaxed 30 to 40 minute walk off the Wappinger Creek Trail.

The **Fern Glen** is on Lovelace Drive next to a stone bridge that crosses the East Branch of Wappinger Creek. Its several habitat displays contain over 150 species of trees, ferns, and wildflowers native to the Dutchess County area. Stroll the boardwalk or relax on the deck overlooking the creek.



Original map drawn by Jo Ann M. Bianchi

Life on the trail!



About Us

The **Cary Institute of Ecosystem Studies** is a private, not-for-profit environmental research and education center. For more than twenty-five years, our scientists have been investigating the complex interactions that govern the natural world. Their objective findings lead to more effective policy decisions and increased environmental literacy. Focal areas include air and water pollution, climate change, invasive species, and disease ecology.

The Cary Institute is dedicated to connecting its findings to learners of all ages. To find out more about our educational offerings, public programs, and free scientific seminars, visit www.caryinstitute.org.

For general information, call: (845) 677-5343

Our **trail head** is located at:
2917 Sharon Turnpike (Rt 44)
Millbrook, New York 12545

Our **main campus** and **auditorium** are located at:
2801 Sharon Turnpike (Rt 44)
Millbrook, New York 12545

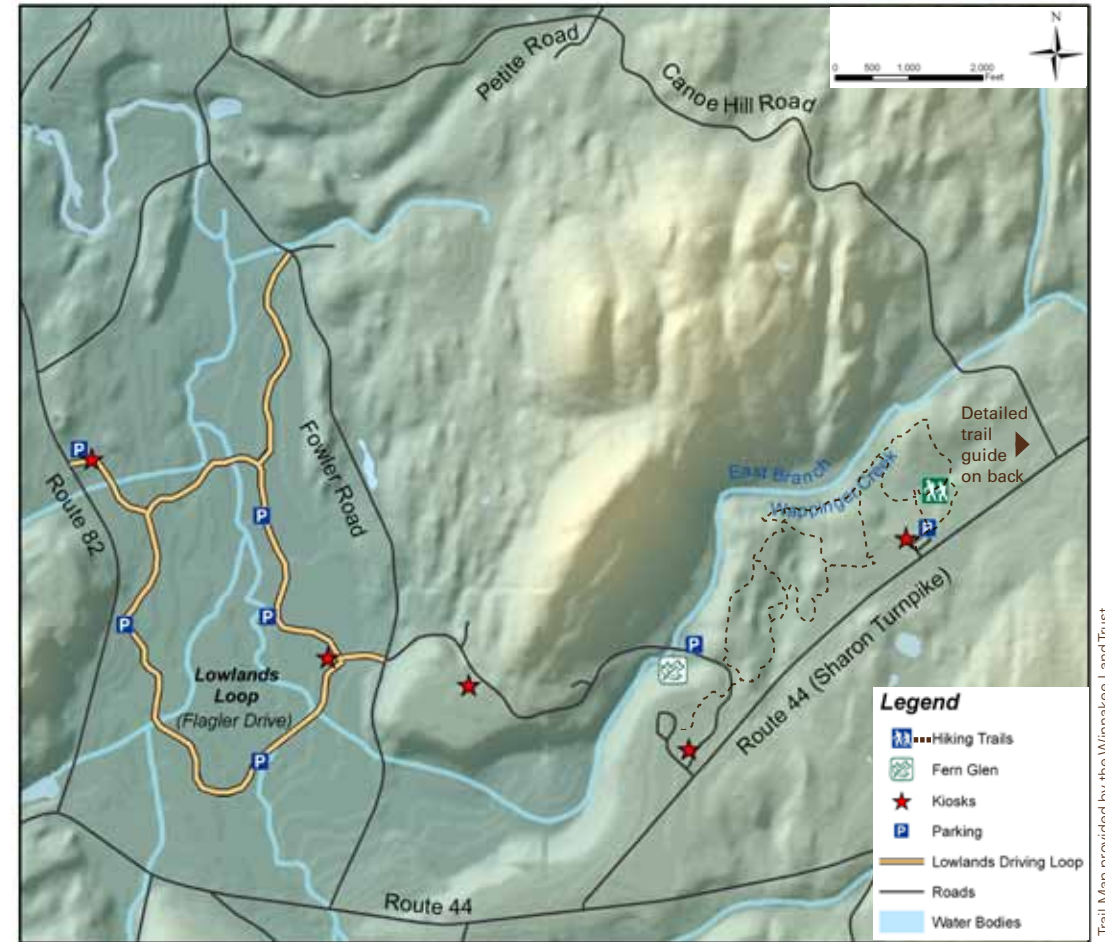


Thanks to the Winnakee Land Trust for creating the property map. Learn more about how the trust protects open space in northern Dutchess County by visiting www.winnakeeland.org

Campus Trail Guide



The science behind environmental solutions



Trail Map provided by the Winnakee Land Trust

Visitor Hours

April 1 - October 31

Grounds are open from sunrise to sunset.

Internal roadway gates open at 8:30 a.m.

Gates are locked at 7 p.m.

The **Cary Institute of Ecosystem Studies** is located in New York's Hudson River Valley, approximately 70 miles north of New York City and 70 miles south of Albany.

Parts of the Cary Institute's 2,000-acre research campus have been designated for public access. Our grounds provide visitors with a unique opportunity to connect with nature and view local wildlife. The Cary Institute's hiking trails, fern glen, and internal roadways are open from April 1 to October 31.

During your visit, please honor the Cary Institute's campus rules. They can be viewed on our information kiosks or online at www.caryinstitute.org.