



GLOBAL LAKE ECOLOGICAL
OBSERVATORY NETWORK

NEW-TO-GLEON *Guide*

What is GLEON?

GLEON stands for Global Lake Ecological Observatory Network. The network is an international community of scientists, educators, policy makers and citizens that are invested in the future of fresh waters. It fosters a research environment in which collaborations across disciplines and political borders are valued.

900+
members



167 lakes
with bouys



27 meetings
and counting



Our mission

Conduct innovative science by sharing and interpreting high-resolution sensor data to understand, predict and communicate the role and response of lakes in a changing global environment.



Site members

contact



WWW.GLEON.ORG



@GLEONETWORK

Upcoming

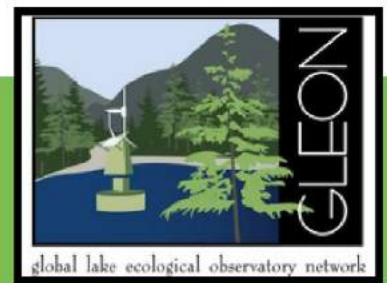
VIRTUAL MEETING
8-12 APRIL 2024

IN PERSON MEETING
2025

REGIONAL MEETINGS



The meeting



A GLEON meeting is not like a typical conference, we think it is way more fun. During the meeting, which usually lasts from Monday to Friday, you spend a lot of time in working groups brainstorming about your research topic, and trying to come up with new, international ideas for projects. It is more like a large, international research workshop. The average group size of the meetings on location is about 100-150 people. The meeting is held near a lake, usually remote and all participants stay overnight on the location. The virtual meetings vary more in size and will be held on the online platform gathertown by a local host.



Main form of communication during meetings is slack

During the meeting you will get a link join the slack channel.

General meeting agenda*

SUNDAY



MONDAY

Morning opening



TUESDAY

Morning opening



WEDNESDAY

Morning opening



THURSDAY

Morning opening



FRIDAY

Excursions and travel day



*based in-person meetings

virtual & in person

The GLEON Student Association is there for all things student related for anyone joining GLEON.

MEETINGS ARE ALTERNATED BETWEEN 'IN-PERSON' AND VIRTUAL TO GIVE EVERYONE IN THE COMMUNITY AN OPPORTUNITY TO JOIN THE MEETINGS.

MEETING GALLERY 2022 - 2023



Working groups

A working group is a space to brainstorm ideas based on their overarching topics.

You can join the group with already developed ideas, or even listen and contribute to others' ideas. There are 10 to 15 Working Groups to choose from which depend on current activity in that topic.

You are welcome to join multiple groups during the week, but plan accordingly for projects being formed. Each project idea will need a champion who will be leading the project after the meeting. Anyone can be a champion of a project as long as they can put in the time.

AD HOC TIME

YOUR TIME TO SUGGEST IDEAS OUTSIDE OF WORKING GROUPS, OR COLLECTIVE WITH OTHER WORKING GROUPS



EXAMPLES OF WORKING GROUPS AND PROJECTS

WINTER LIMNOLOGY

Consequences of lake and river ice loss on cultural ecosystem services

Lesley B. Knoll^{1*}, Sopna Sharma², Blaize A. Denfeld³, Giovanna Flaim⁴, Yukari Hori⁵, John J. Magnuson⁶, Dietmar Stralke⁷, Gesa A. Weyhenmeyer⁸

The unique methodological challenges of winter limnology

Benjamin D. Block^{1*}, Blaize A. Denfeld², Jason D. Stockwell¹, Giovanna Flaim³, Hans-Peter F. Grossart^{4,5}, Lesley B. Knoll⁶, Dominique B. Maier², Rebecca L. North⁷, Milla Rautio^{8,9,10}, James A. Rusak^{11,12}, Steve Sadro¹³, Gesa A. Weyhenmeyer¹⁴, Andrew J. Bramburger¹⁵, Donn K. Branstator¹⁶, Kalevi Salonen¹⁷, Stephanie E. Hampton¹⁸

RESERVOIRS AND LAKE MANAGEMENT

High-frequency lake data benefit society through broader engagement with stakeholders: a synthesis of GLEON data use survey and member experiences

Robyn L. Smyth, Alicia Caruso, Lisa Borre, Guangwei Zhu, Mengyuan Zhu, Amy L. Hetherington, Eleanor Jennings, Jennifer L. Klug, Maria Cintia Piccolo, James A. Rusak, Kathleen C. Weathers & Courtney Wigdahl-Perry

WORKING GROUPS

LAKE METABOLISM/
CARBON CYCLING

FRESHWATER BIOLOGICAL
INTERACTIONS (FBI)

CYANOBACTERIA

LAKE MODELLING AND SIGNAL
PROCESSING

SIGNAL PROCESSING AND
FLUORESCENCE

REMOTE SENSING

CLIMATE AND LAKE
DYNAMICS

COMMUNITY SCIENCE

Gleon students

"DURING MY PHD I VISITED FOUR GLEON MEETINGS AND I ALWAYS FELT LIKE THE COMMUNITY WAS MY SCIENTIFIC FAMILY THROUGHOUT MY PHD."
- QING ZAHN, A PHD STUDENT IN GLEON



Students are an integral part to the GLEON community. Students bring in new ideas, can champion projects and are welcome to participate in any part of a meeting. For students, the meeting starts already on the Sunday before the meeting. On that day there are workshops organized on different topics, where you can choose the ones you like. Secondly, you are expected to do a poster presentation during one of the two sessions.



WORKSHOPS

The GSA organises workshops on the first day of the meeting. These will be especially targeted at students. However, they can be attended by anyone.

POSTER PRESENTATION

We value your input in the Working Groups, but we'd like to see what you are working on. If you are a student of any kind (Master, PGR or otherwise) we ask you to present a poster whilst attending the GLEON meeting. This can be a poster used at a previous conference or meeting. The poster session usually takes place around lunchtime outside of working group meeting hours.



THE GLEON STUDENT ASSOCIATION (GSA)

The GLEON Student Association (GSA) organises social activities during the meetings, and they represent the students voice in the GLEON leadership team.



Three subcommittees organize parts of the meetings. The workshop subcommittee organizes the workshops on Sunday before the meeting.

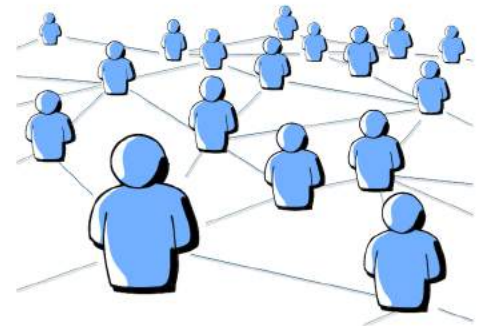
The poster subcommittee organizes the poster sessions during the meeting. The communications subcommittee writes blogs about GLEON (members). GSA also organizes the limnoseries, an online lecture series about many lake-related topics.

How to contribute (more) in GLEON

NETWORK PARTNERSHIP PROGRAMM (NPP)

To find your way if you are new to GLEON you will be paired up with someone that has participated in multiple gleon meetings. You can ask them all your questions, they can introduce you to people and you can have a meal together. This will help you get to know the community as well as get familiar with the meeting concept.

If you are new you will automatically participate and after a few meetings you might be asked to be senior partner yourself.



COMMITTEE FOR INCLUSIVE COLLABORATION (CCC)

“I was very proud to overhear a graduate student refer to GLEON as “the most inclusive scientific society and conference they have ever been part of”. As the CCC chair, this statement is heartwarming and also challenging. I aim to help maintain GLEON's reputation and potentially build on it at an international scale. GLEON students are empowered to lead and be heard; this is one of the fundamental aspects of GLEON that the CCC strives for.”

– Rebecca North, chair of the CCC, associate professor at University of Missouri

The CCC is the Committee for inclusive Collaboration was put in place because maintaining a welcoming, inclusive, inspirational, and productive environment remains a very high priority for GLEON. The CCC has put one mechanism in place to evaluate this and that is via a survey at the end of every GLEON meeting. The committee responds to survey results, as well as less formal feedback during the meetings. The CCC sometimes also organizes an activity to actively think about Inclusive Collaboration.

THE STEERING COMMITTEE

The steering committee consists of 15 GLEON members and is chaired by the two co-chairs of GLEON. Together they organize the network, prepare the meetings, introduce new GLEON members to the network during the meetings and decide in which direction the network should grow. However, GLEON is a grassroots, bottom-up network and they are very open to input from members.

THE LOCAL HOST



Every meeting will be hosted by a research institute from the community.

They organize a venue, are part of the programme committee for that meeting and plan excursions where we visit a lake in the surroundings and sometimes their research facility or other interesting things in the area. The conference is always held close to a lake, so a field visit is easily done.

For the local hosts, it is a great opportunity to showcase their research and their home country or region. Next to the in-person hosts, the virtual meetings also have a local host, creating a more accessible way to be a host for some research institutes or countries across the community.

GOOD TO KNOW



WHEN YOU PARTICIPATE IN A GLEON MEETING YOU WILL BE **AUTOMATICALLY** ADDED TO THE MAILING LIST. SO YOU NEVER HAVE TO MISS ANYTHING!

YOU DON'T HAVE TO COME WITH IDEAS TO WORKING GROUP MEETINGS, BUT IT CAN HELP TO INTRODUCE YOUR RESEARCH IDEA AND GET PEOPLE ON BOARD WITH YOUR PLANS, E.G. PEOPLE WITH SUPPLEMENTARY KNOWLEDGE AND SKILLS.



ALL STUDENTS WHO JOIN A GLEON MEETING ARE **PART OF THE GSA** AND INVITED TO THEIR ACTIVITIES, THERE IS NO NEED TO SUBSCRIBE TO THE GSA IN ANY FORM.

YOU CAN **(CO-)LEAD A WORKING GROUP** IF YOU WANT TO BE MORE INVOLVED



OTHER ACTIVITIES

LIMNOSERIES

The GSA organizes Limnoseries workshops and lectures throughout the year. Limnoseries are lectures and/or hands-on workshops covering topics from physics to fish, spanning data collection, data analysis, and science communication. The series enables GLEONites to gain new knowledge and skills and for individuals to present and share their expertise with their GLEON colleagues. Recordings of past Limnoseries are available on [GLEON's YouTube channel](#).

GLEON REGIONAL MEETINGS



Regional Gatherings typically take place over Zoom during GLEON meetings.

Regional Gatherings welcome participation from a broad range of people interested in lakes and networking, and offer an informal, supportive forum for amicable discussions. Participants can join whichever geographical region they feel most affiliated with. Regional Gatherings typically take place for the following regions: South & Central America, North America, Asia & Oceania, Africa, and Europe. Regional Gatherings are free and do not require GLEON meeting registration to attend.

