

Changes in a Marsh: Iona Island

1991-2005

Photos by Alan W. Wells

Virginia Rail photo by Matthew White

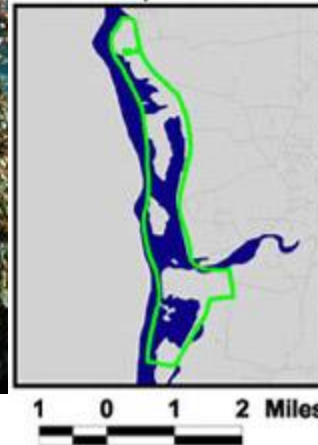
Iona Island



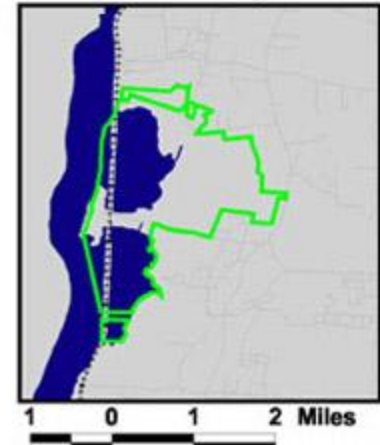
Source: www.panoramio.com

The Island has been designated a National Natural Landmark and is one of four sites which are part of the Hudson River National Estuarine Research Reserve.

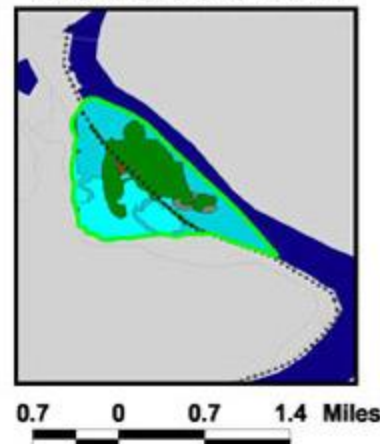
Stockport Flats



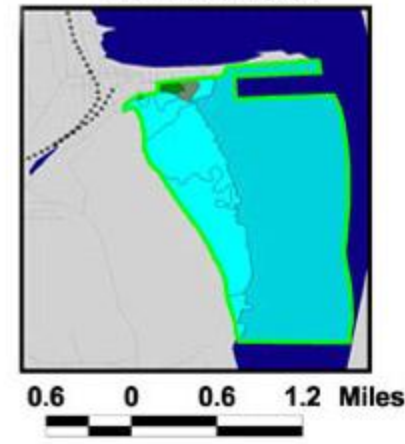
Tivoli Bay



Iona Island and Marsh



Piermont Marsh





Doodletown Bight

Salisbury Meadow

Ring Meadow

© 2007 Tele Atlas
Image © 2007 New York GIS

© 2007 Google™

Pointer 41°18'09.84" N 73°58'37.79" W

Streaming ||||| 100%

Eye alt 6141 ft

Common native marsh plant, cattail (*Typha angustifolia*)



Source: <http://flora.huh.harvard.edu>



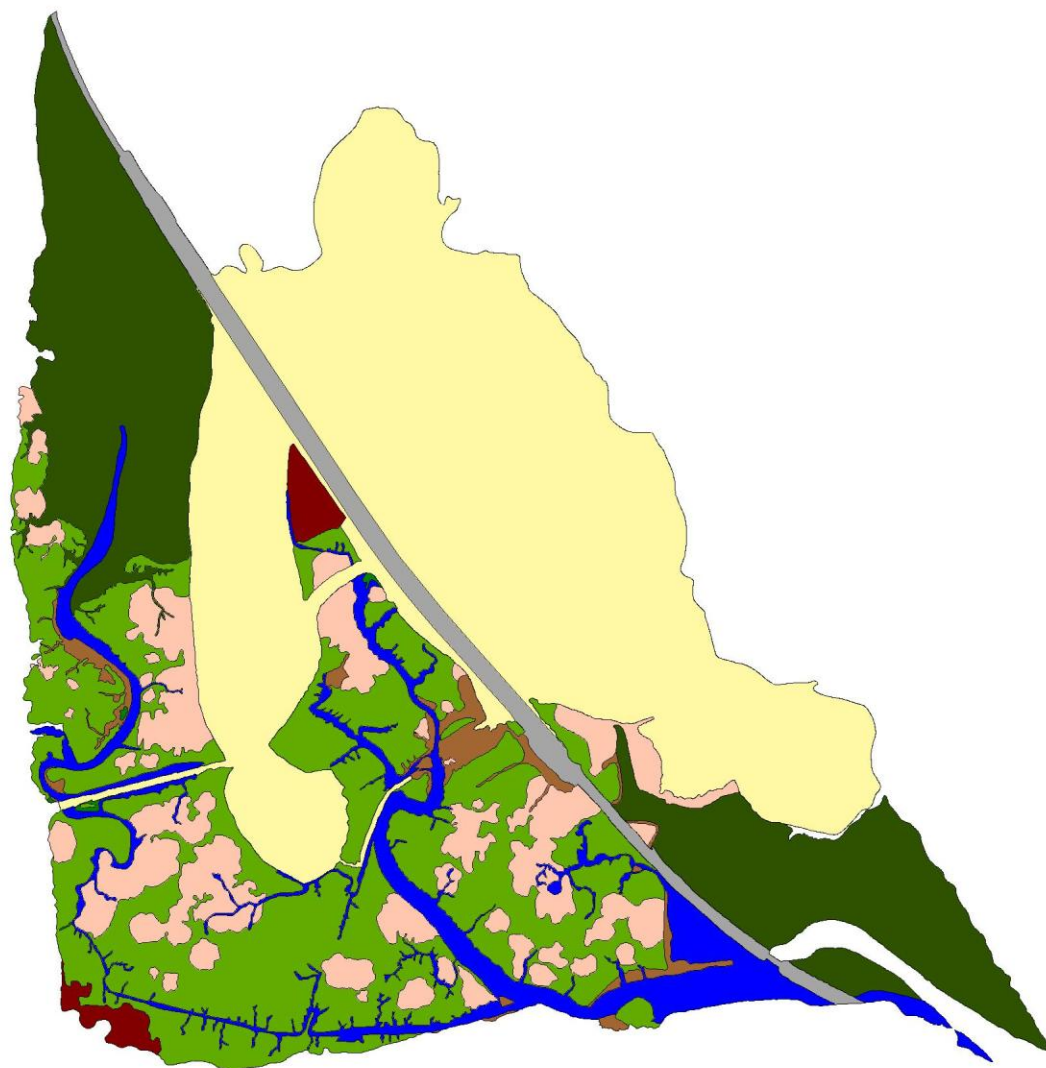
Source: www.tncweeds.ucdavis.edu



Source: Cornelia Harris

Invasive marsh plant: Common reed (*Phragmites australis*)

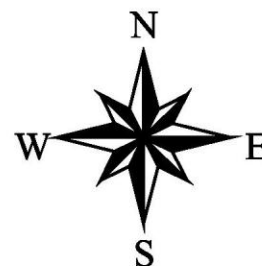
Iona 1991



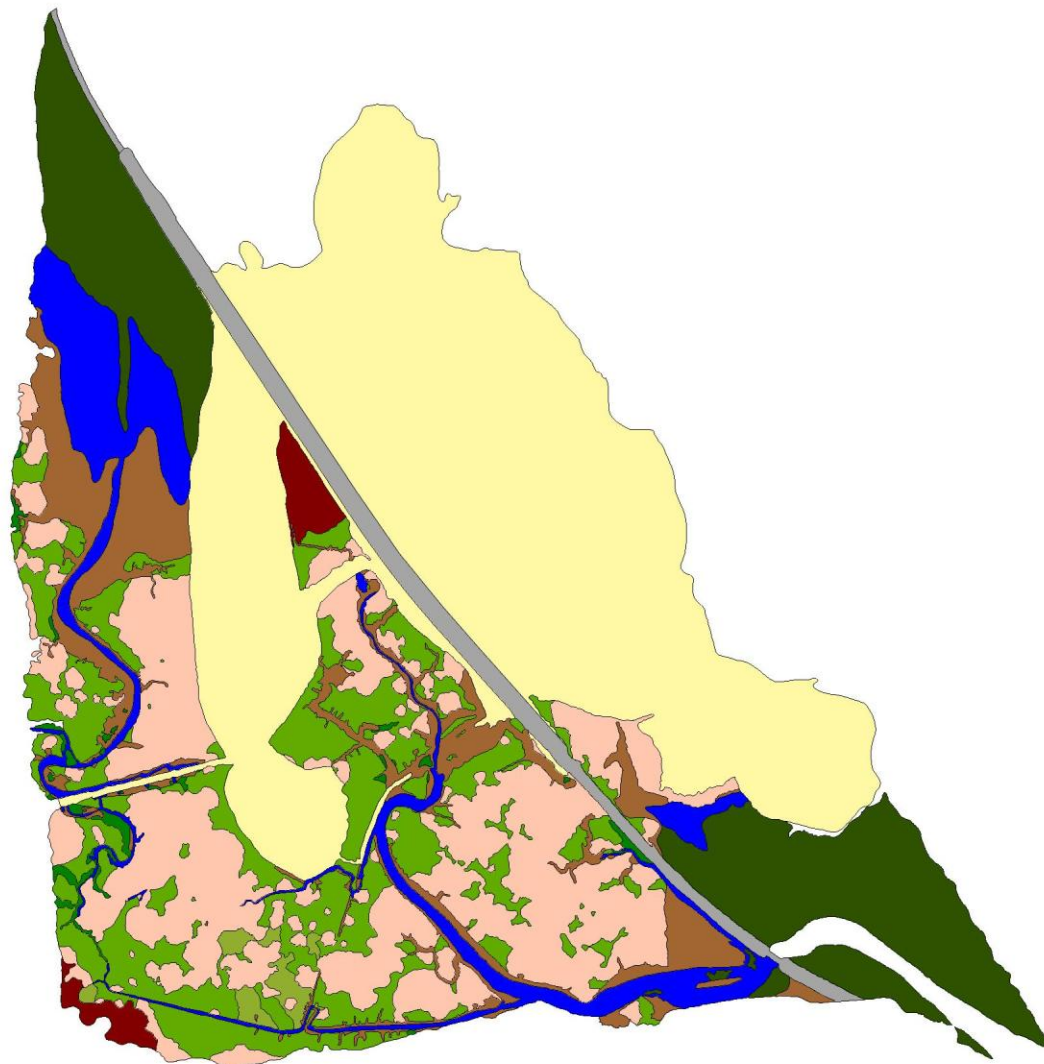
I_veg91_fin

- Open Water/Tidal Channels
- Upland/Non-Wetland
- Railroad
- Unvegetated Flats
- Phragmites australis
- Scirpus sp.
- Scirpus pungens
- Typha angustifolia
- Acorus calamus
- Lythrum salicaria
- Vegetated Lower Intertidal
- Wooded swamp
- Scrub/Shrub
- Submerged aquatic vegetation
- Trapa natans

500 0 500 1000 Meters



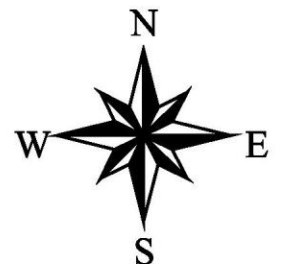
Iona 1997



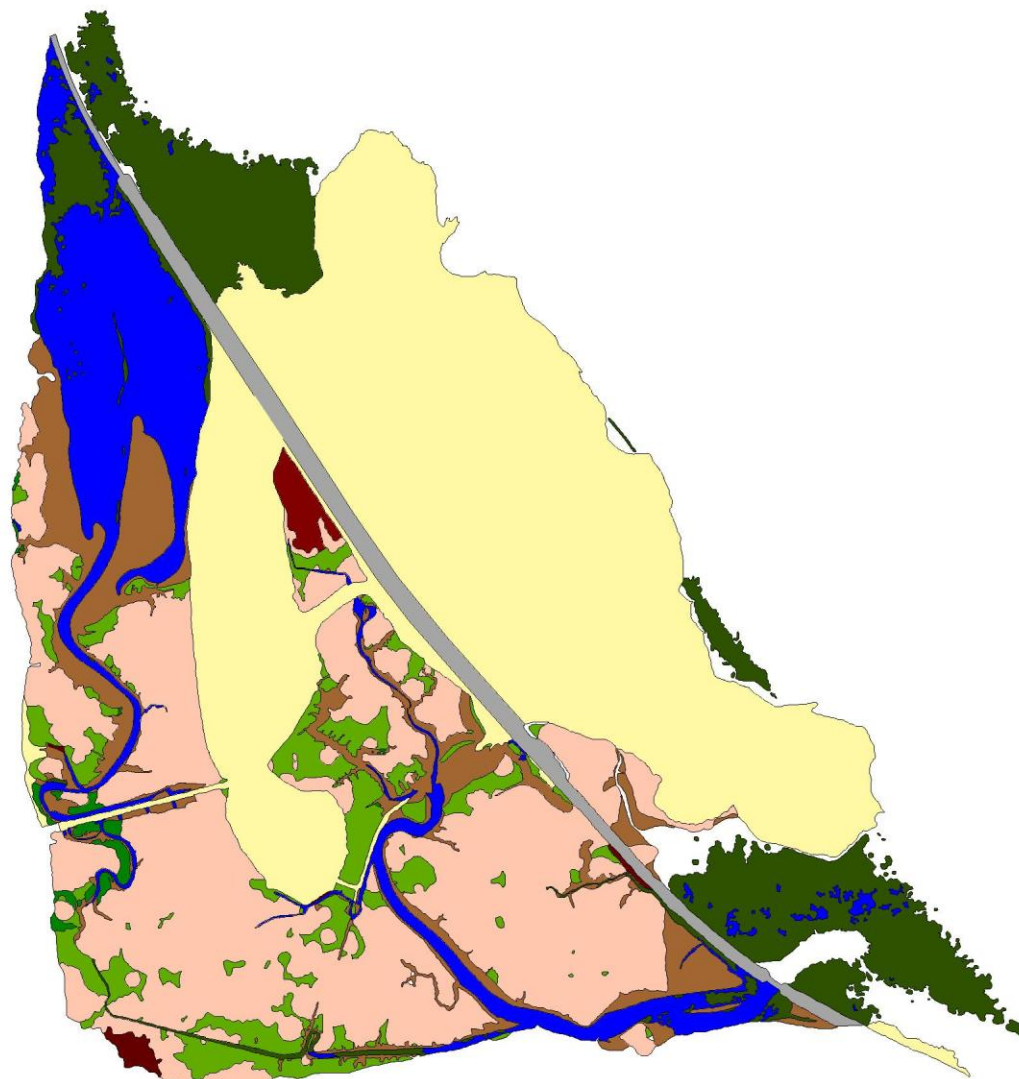
I_veg97_fin

- Open Water/Tidal Channels
- Upland/Non-Wetland
- Railroad
- Unvegetated Flats
- Phragmites australis
- Scirpus sp.
- Scirpus pungens
- Typha angustifolia
- Acorus calamus
- Lythrum salicaria
- Vegetated Lower Intertidal
- Wooded swamp
- Scrub/Shrub
- Submerged aquatic vegetation
- Trapa natans

500 0 500 1000 Meters



Iona 2005



Iona05_3_30.shp

- Open Water/Tidal Channels
- Upland/Non-Wetland
- Railroad
- Unvegetated Flats
- Phragmites australis
- Scirpus sp.
- Scirpus pungens
- Typha angustifolia
- Acorus calamus
- Lythrum salicaria
- Vegetated Lower Intertidal
- Wooded swamp
- Scrub/Shrub
- Submerged aquatic vegetation
- Trapa natans

500 0 500 1000 Meters

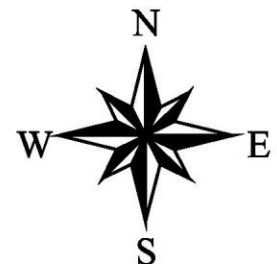




Photo Credit: Alan W. Wells

Red-winged Blackbird



Photo Credit: Alan W. Wells

Marsh Wren



Photo Credit: Alan W. Wells

Swamp Sparrow



Yellow Warbler

Photo Credit: Alan W. Wells



Virginia Rail

Photo Credit: Matthew King



Common Yellowthroat

Photo Credit: Alan W. Wells



Photo Credit: Alan W. Wells

Canada Goose



Least Bittern



American Goldfinch

Photo Credit: Alan W. Wells



Wood Duck

Photo Credit: Alan W. Wells



Song Sparrow

Photo Credit: Alan W. Wells



Gray Catbird

Photo Credit: Alan W. Wells



American Robin

Photo Credit: Alan W. Wells



Willow Flycatcher

Photo Credit: Alan W. Wells



Least Bittern

Photo Credit: Alan W. Wells

Aerial Spread of *Phragmites australis* at Iona 1974-2005

