

Westchester County Aerial Photos: 1925 and 1995



This image, taken in 1925, shows part of the Croton waterfront in the upper left hand corner.



Croton
River

Rt. 9

Photo of Croton waterfront taken in 1995.



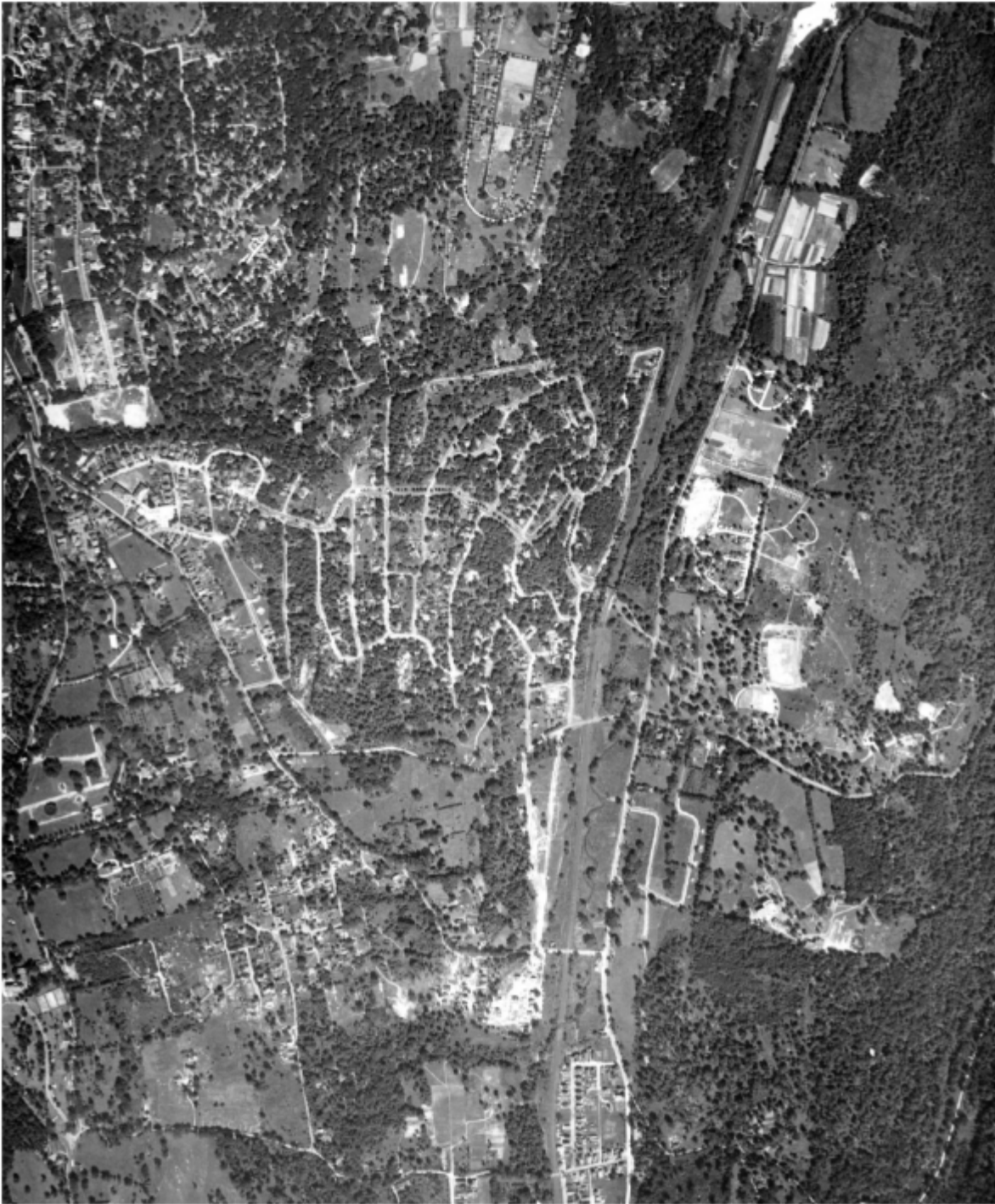
Waterfront
at Hastings-
on-Hudson
in 1925.

Route 9



Hastings-on-Hudson waterfront in 1995.

Route 9



Hastings- on-Hudson, 1925.

Ravensdale

Road cuts across the image; this is before the Saw Mill Parkway was built. New roads can be seen as bright white.



Hastings- on-Hudson, 1995

Ravensdale Road
intersecting with the
Saw Mill Parkway



Irvington,
1925

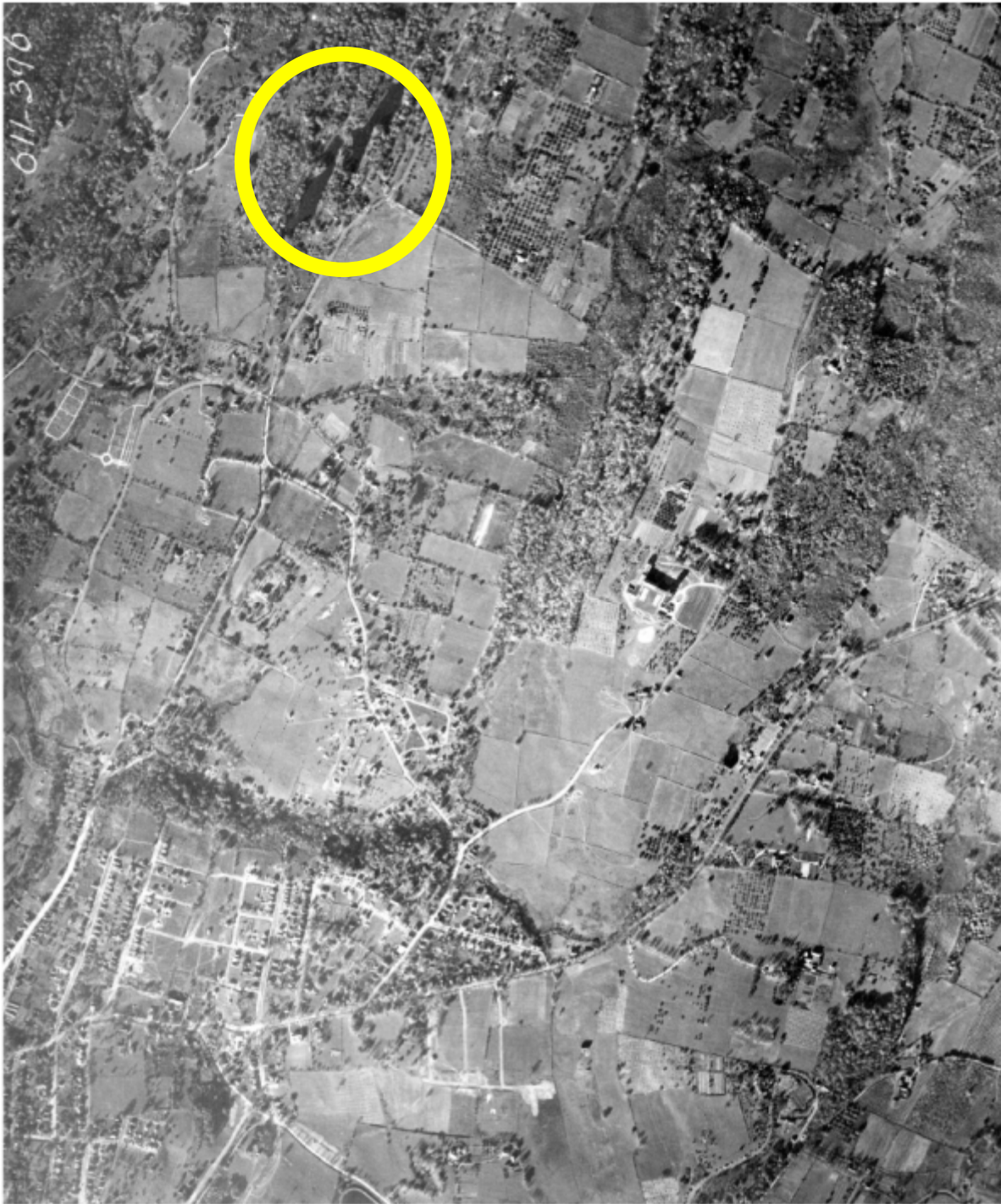
Irvington Reservoir



Saw Mill River
Parkway

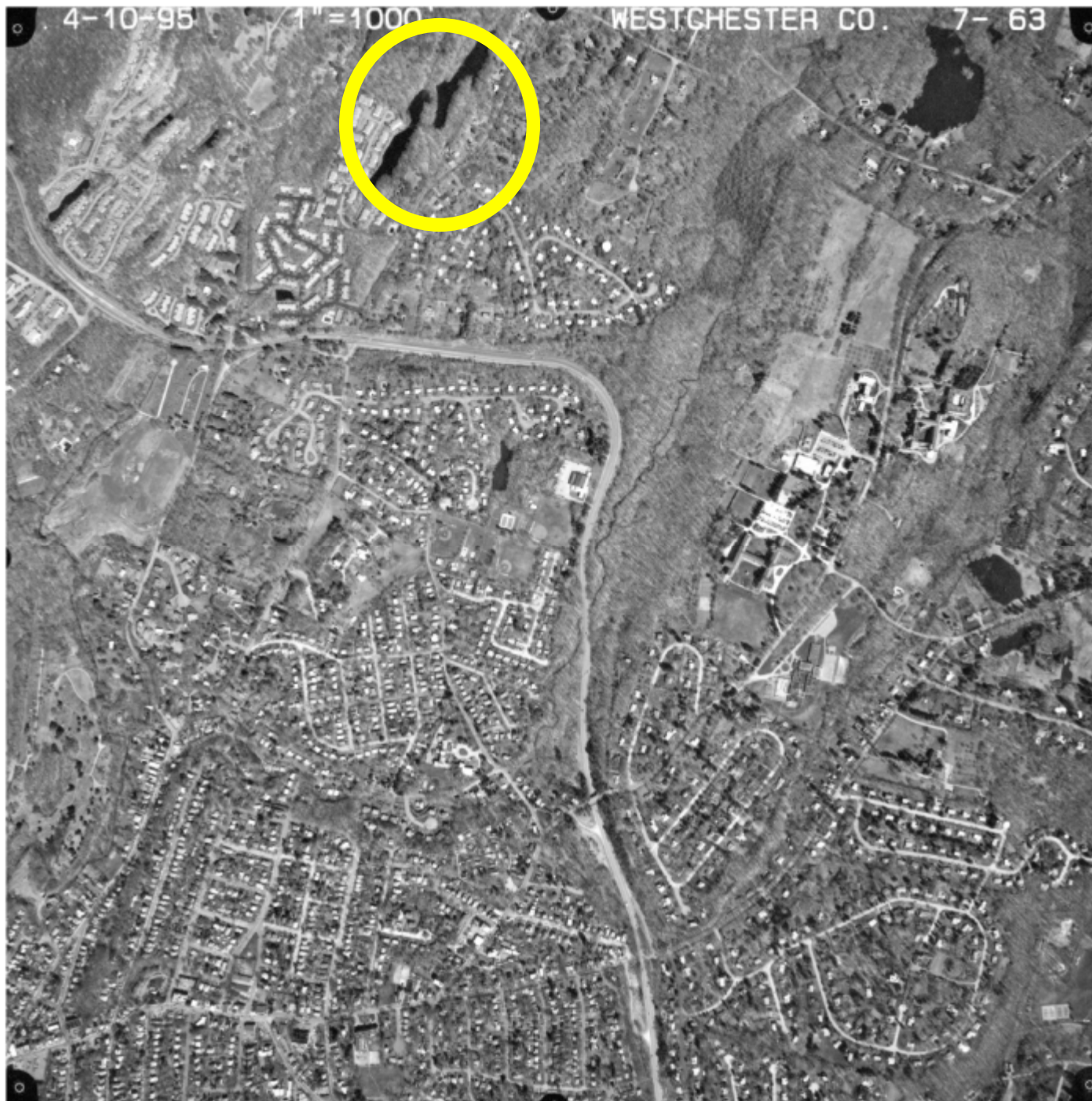
Irvington,
1995

Irvington Reservoir



Ossining, 1925

Use the small lakes in the
upper left hand corner as
reference.



Ossining,
1995



White Plains, 1925

Roads for future subdivisions are visible in lower right hand side of photo. You can also use the lakes to match up the two images.



White
Plains,
1995



White Plains, 1925

(although the images do not match up exactly, you can see the contour outline of the trees in the second image, along with the development that is circled)



White
Plains,
1995

Interstate
287/87



White Plains, 1925



White Plains,
1995