

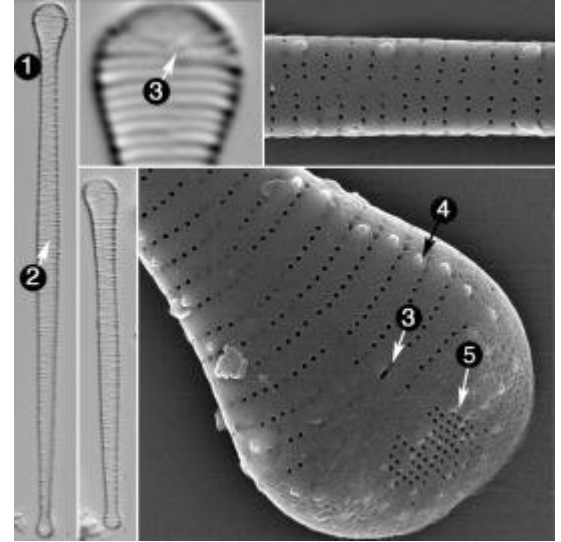
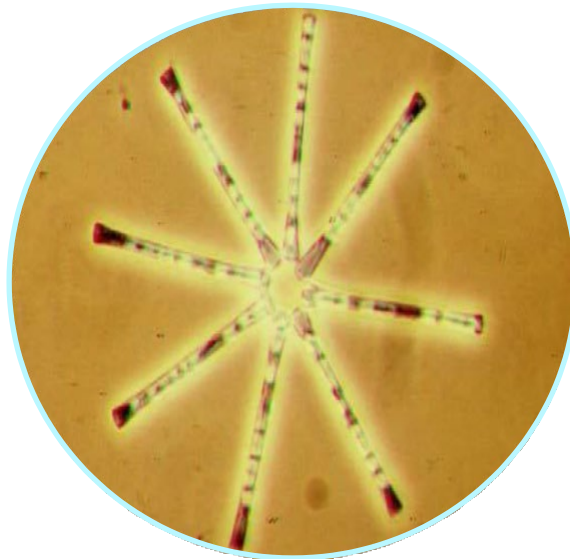
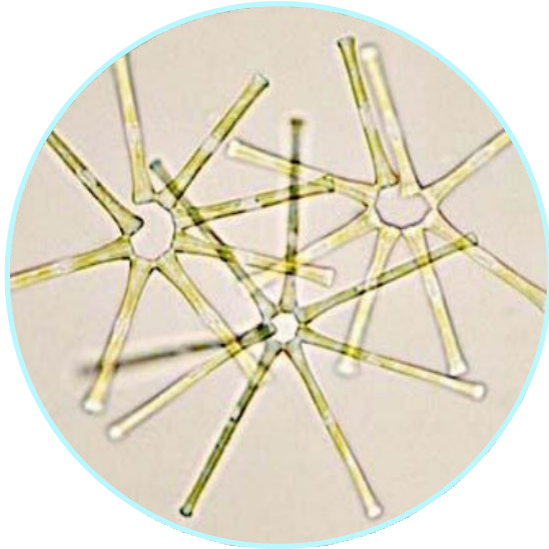


Cary Institute  
of Ecosystem Studies

**Changing Hudson Project**

*Diatom ID Cards of the Hudson Estuary  
(and other common algae)*

# *Asterionella formosa*



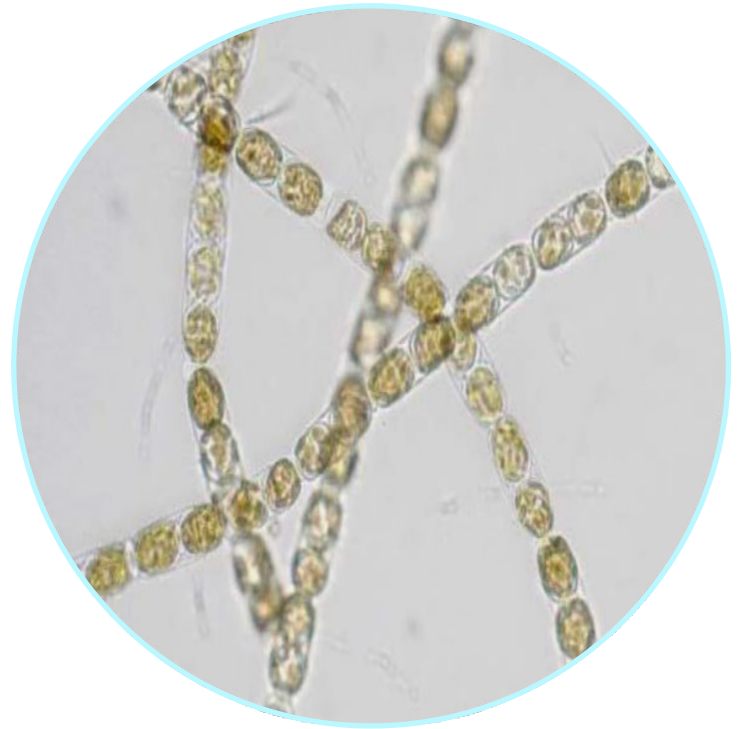
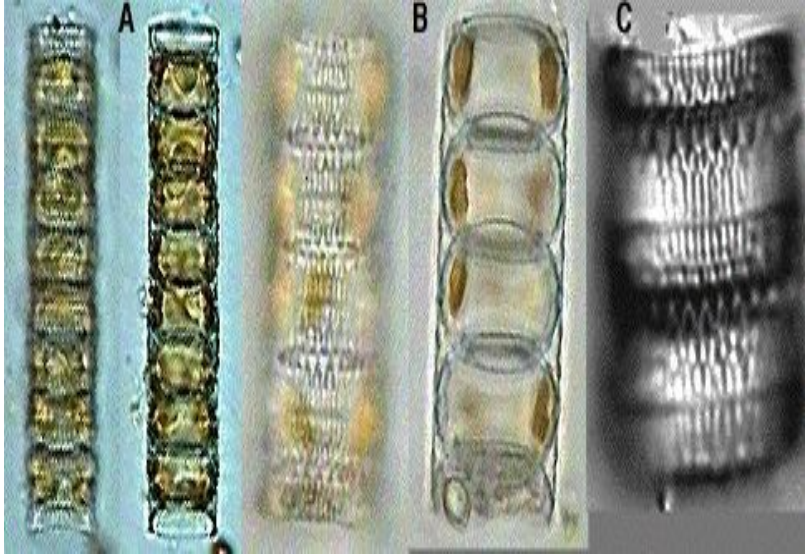
**What is it?** *Asterionella formosa* is a planktonic **diatom**

**How big is it?** Each cell is 0.04-0.07 mm; they attach together in star-like groupings

**What eats it?** zooplankton, tiny invertebrates, some small fish

**Where does it live?** fresh & brackish water; prefers salinity of <5 ppt

# *Paralia sulcata*



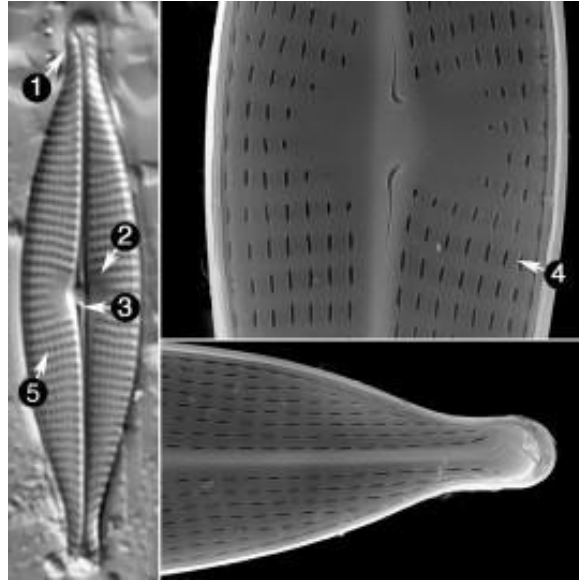
**What is it?** *Paralia sulcata* (formerly *Melosira sulcata*) is a planktonic **diatom**

**How big is it?** each cell is about 0.02 mm; cells join end-to-end in chains

**What eats it?** zooplankton, tiny invertebrates, some small fish

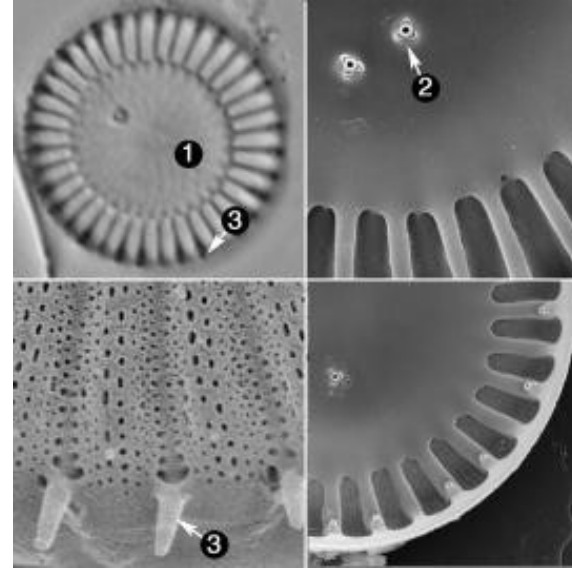
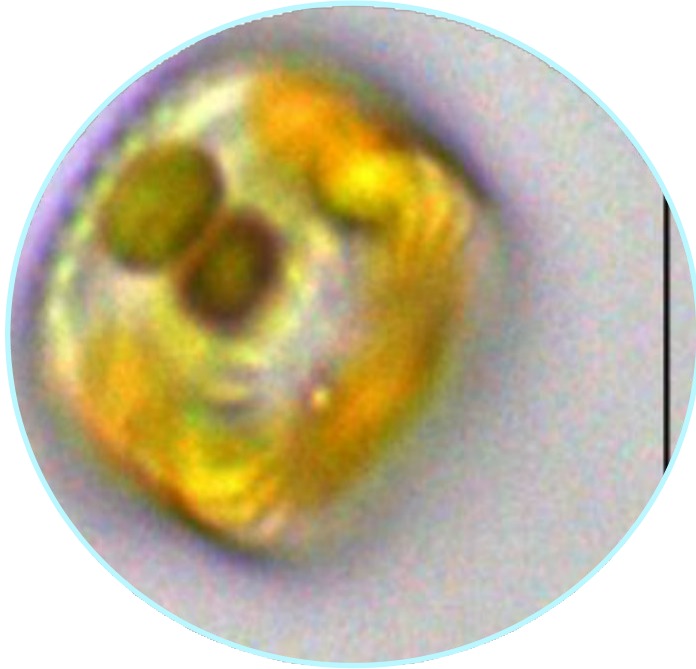
**Where does it live?** brackish and saltwater; prefers salinity of 5>30 ppt

# *Navicula gregaria*



- What is it?** *Navicula gregaria* is a highly tolerant benthic **diatom**
- How big is it?** each cell is about 0.03 mm; cells do not form colonies or chains
- What eats it?** zooplankton, tiny invertebrates, some small fish
- Where does it live?** fresh & brackish water; prefers salinity of <2.5 ppt

# *Cyclotella meneghiniana*



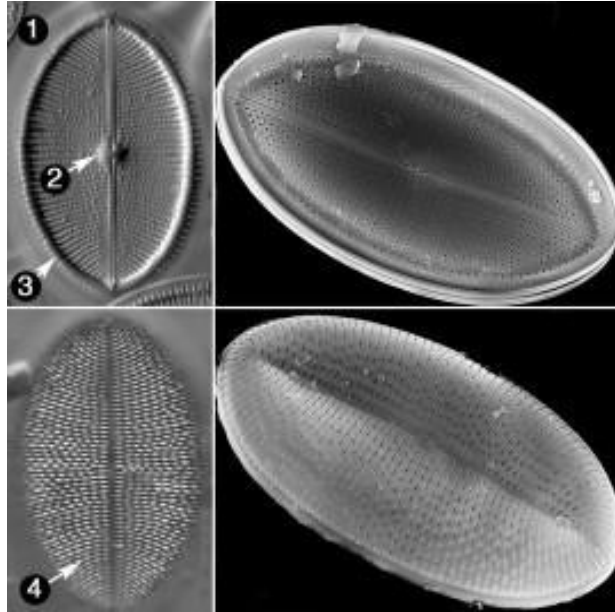
**What is it?** *Cyclotella meneghiniana* is a planktonic **diatom**

**How big is it?** each cell is about 0.01 mm; cells do not form chains

**What eats it?** zooplankton, tiny invertebrates, some small fish

**Where does it live?** brackish and saltwater; prefers salinity of 2.5-35 ppt

# *Cocconeis placentula*



**What is it?** *Cocconeis placentula* is a benthic **diatom**

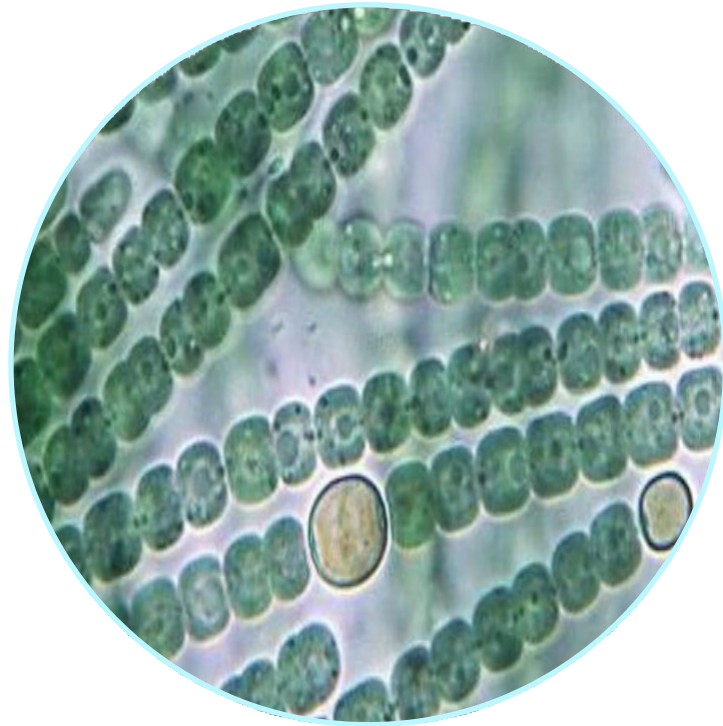
**How big is it?** each cell is about 0.03-0.07 mm; cells do not form colonies or chains

**What eats it?** zooplankton, tiny invertebrates, some small fish

**Where does it live?** fresh & brackish water; prefers salinity of <2.5 ppt

# *Anabena*

\*not a diatom



**What is it?** cyanobacteria (formerly called blue-green algae) in the genus *Anabaena*

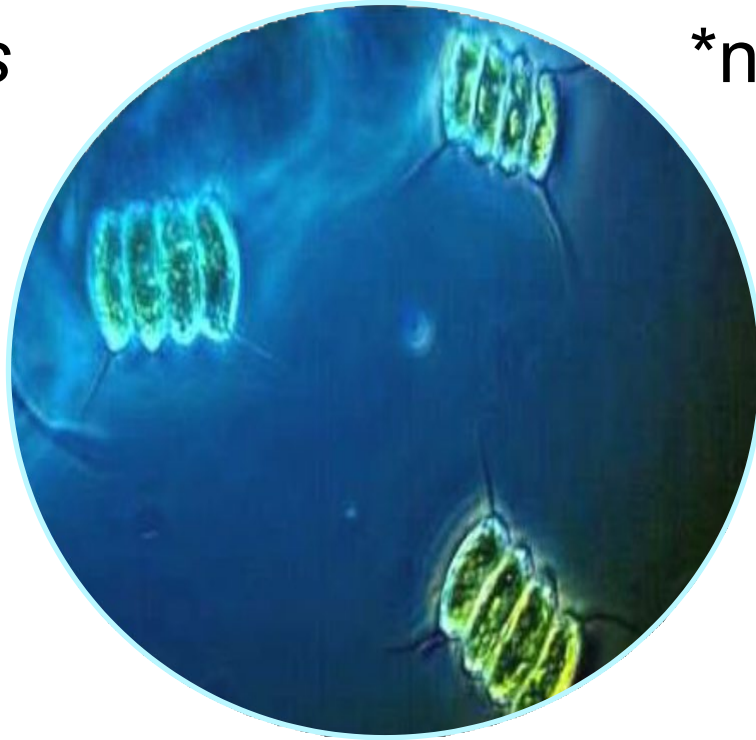
**How big is it?** each cell is about .01 mm; cells join end-to-end to form strings

**What eats it?** zooplankton, tiny invertebrates but it produces poisons that can cause death

**Where does it live?** mostly fresh & brackish water in the Hudson

# *Scenedesmus*

\*not a diatom



**What is it?** one of many species of green algae in the genus *Scenedesmus*

**How big is it?** cells (about .02 mm across) form groups in multiples of two

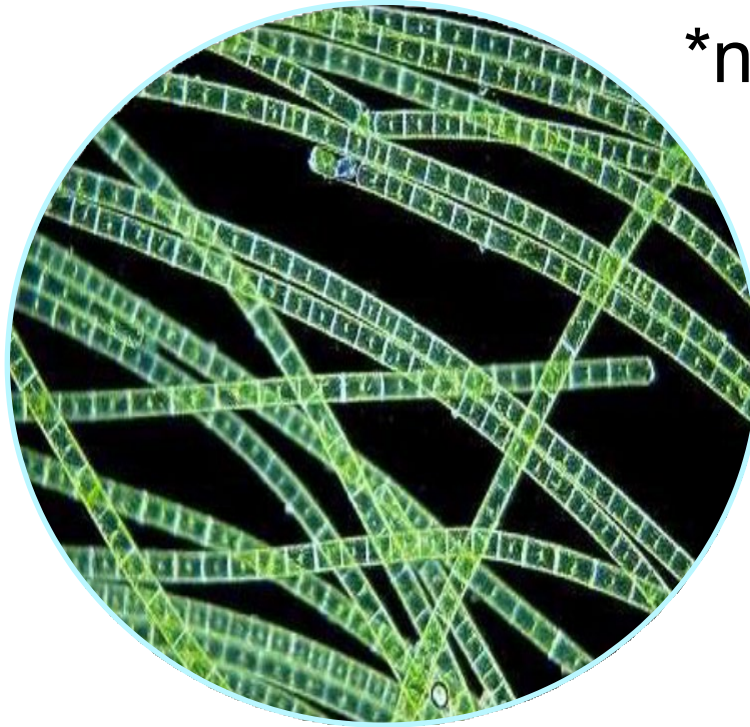
**What eats it?** zooplankton, tiny invertebrates, some small fish

**Where does it live?** many species live in fresh water; rivers, ponds, lakes, & marshes



# *Spirogyra*

\*not a diatom



***What is it?*** one of many species of green algae in the genus Spirogyra

***How big is it?*** microscopic cells join end-to end to form strings

***What eats it?*** zooplankton, tiny invertebrates, some small fish

***Where does it live?*** Many species live in in fresh water; rivers, ponds, lakes, & marshes