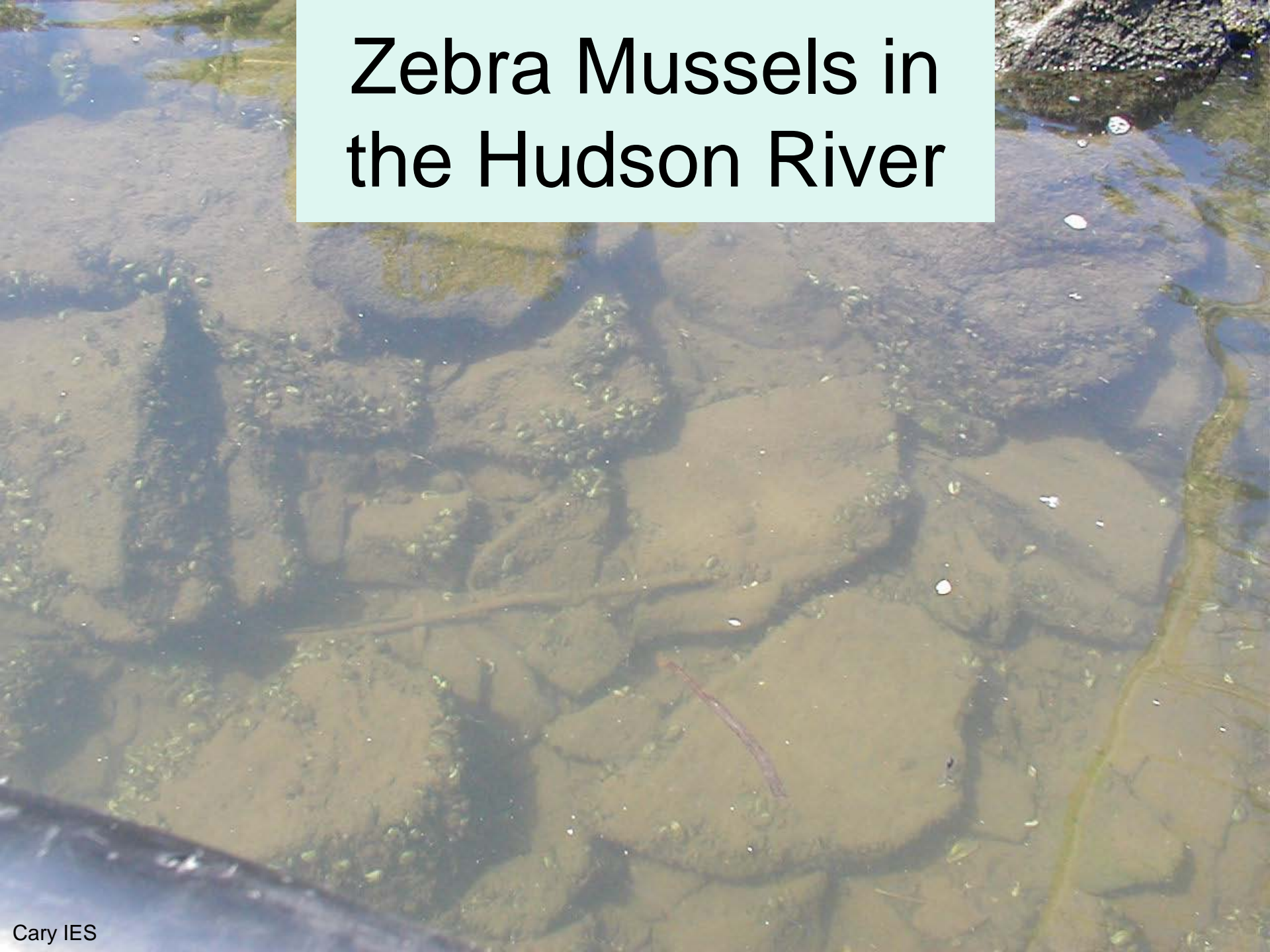


Zebra Mussels in the Hudson River



Zebra Mussels - *Dreissena polymorpha*

- Native to SE Europe and W Asia
- 1985 via European ship's ballast water to lake by Detroit
- Spread through Great Lakes and Erie Canal
- Live in fresh & brackish water





Cary IES

Invasive zebra mussels



Cary IES

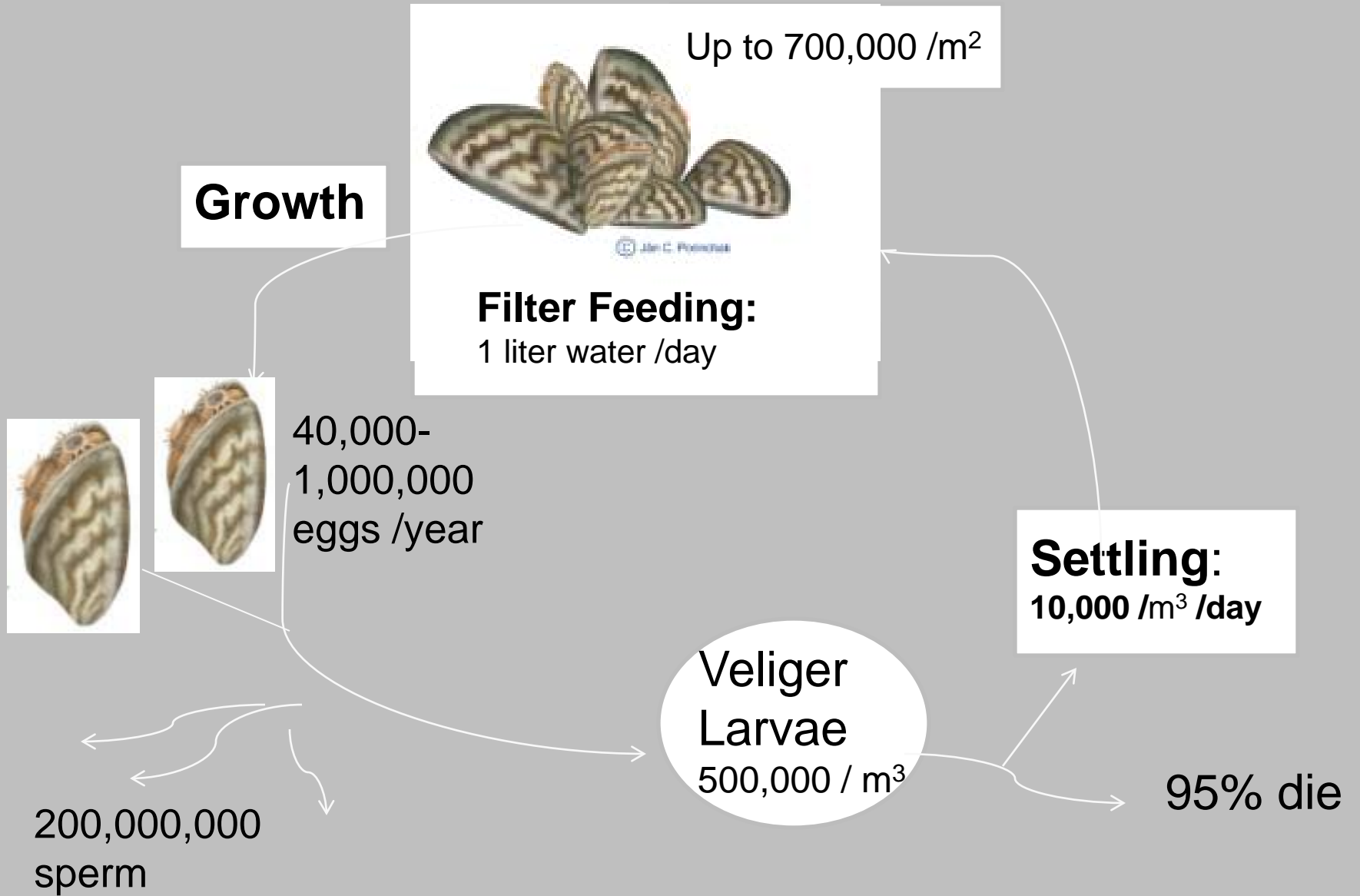
Native pearly mussels

Zebra Mussels

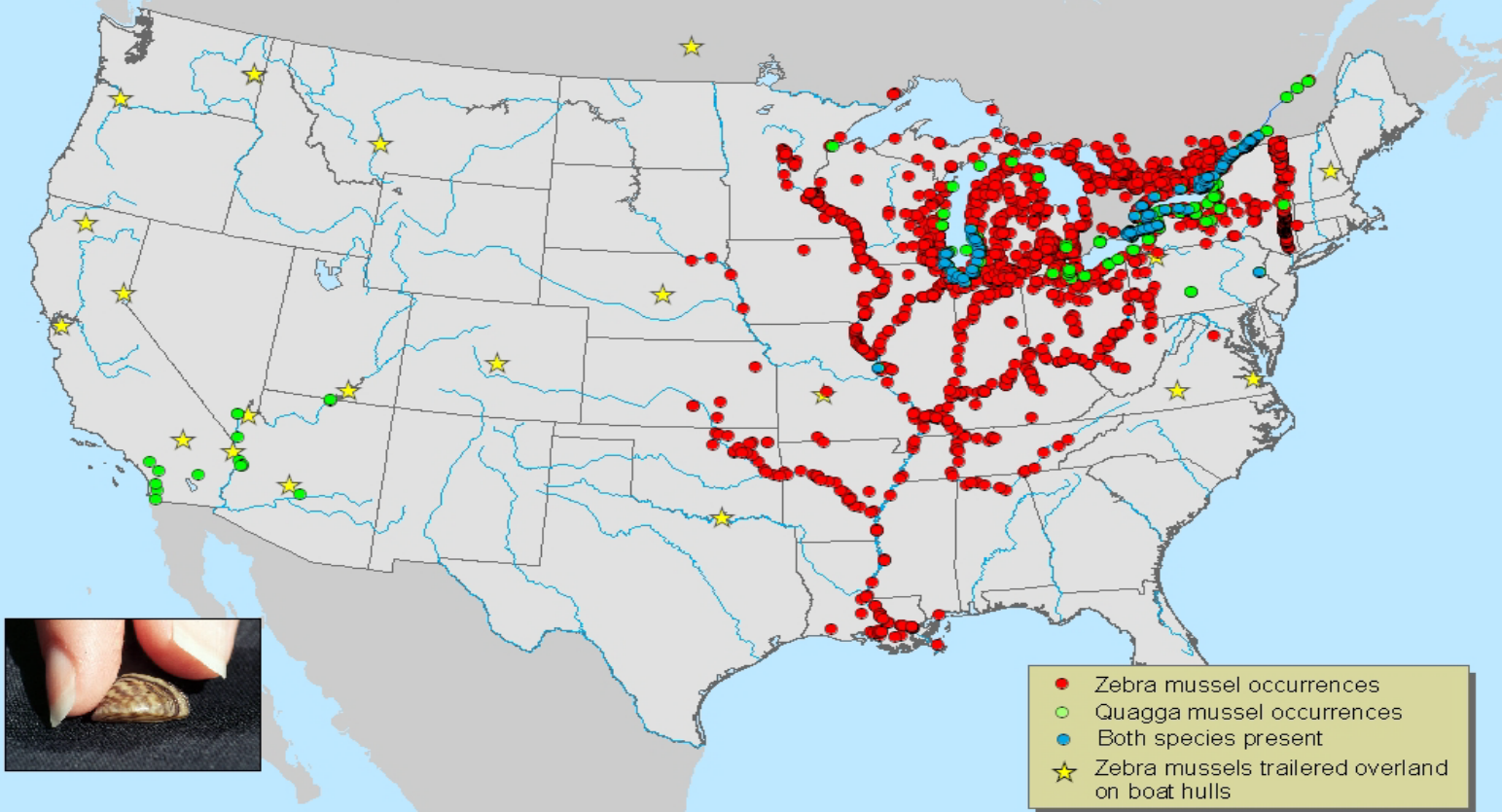
Dreissena polymorpha

- Life history
 - Warm water, external fertilization
 - Larvae, veligers
 - Settle on hard surfaces
 - Mature at one year
 - Live 6 - 7 years
 - Filter feeders, plankton
 - Eaten by some fish, some ducks, crayfish and crabs





Zebra and Quagga Mussel Sightings Distribution
(*Dreissena polymorpha* and *D. rostriformis bugensis*)



Map produced by the U.S. Geological Survey, Gainesville, Florida, October 15, 2007.

A map showing the distribution of zebra mussels and quagga mussels, another invasive. (USGS, 2007. Zebra Mussel Information: U.S. Distribution Maps, <http://nas.er.usgs.gov/zebra.mussel/>).

Change associated with zebra mussel invasion

